

# Application of the MIPv6 protocol to the multi-homing problem

draft-bagnulo-multi6-mnm-00

Marcelo Bagnulo – UC3M

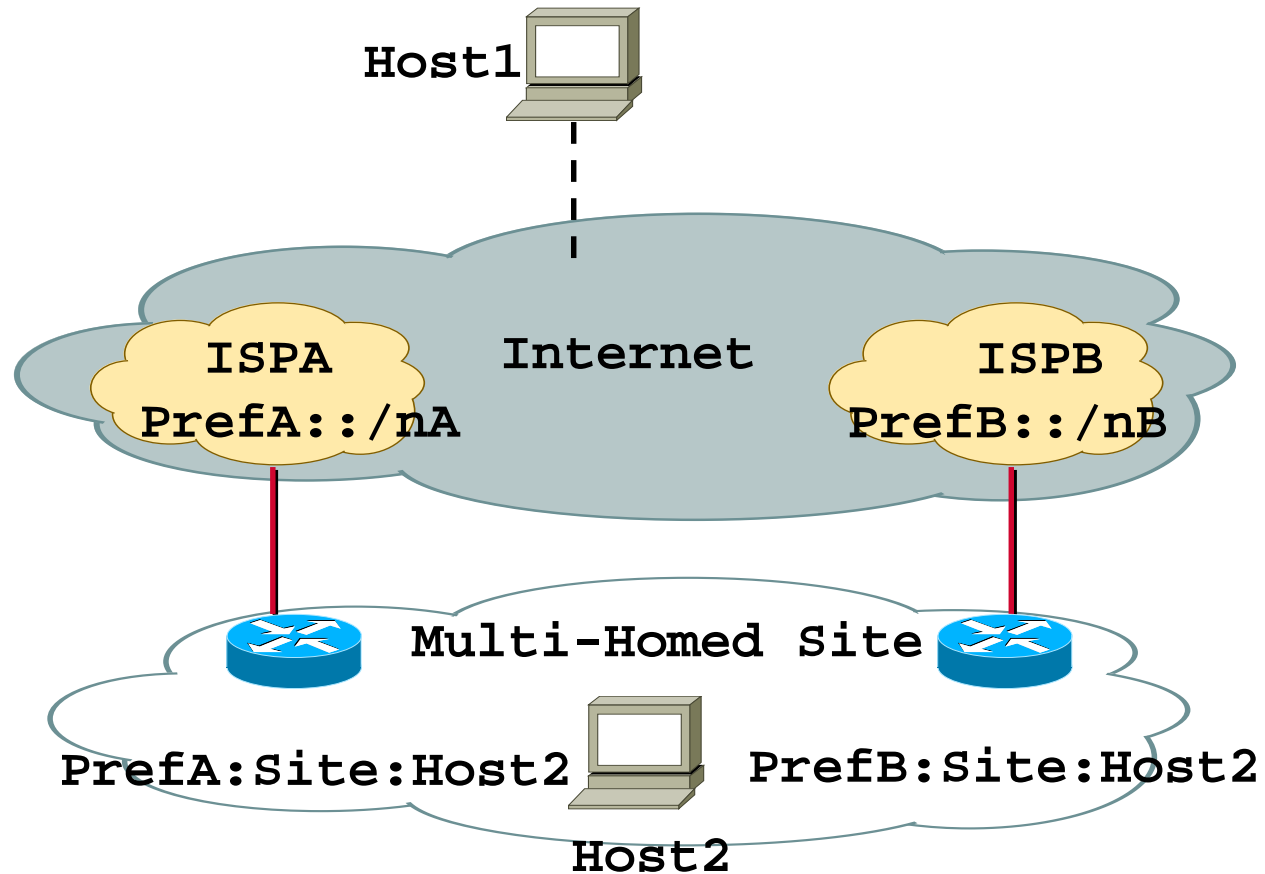
---

Proposed multiple times including:

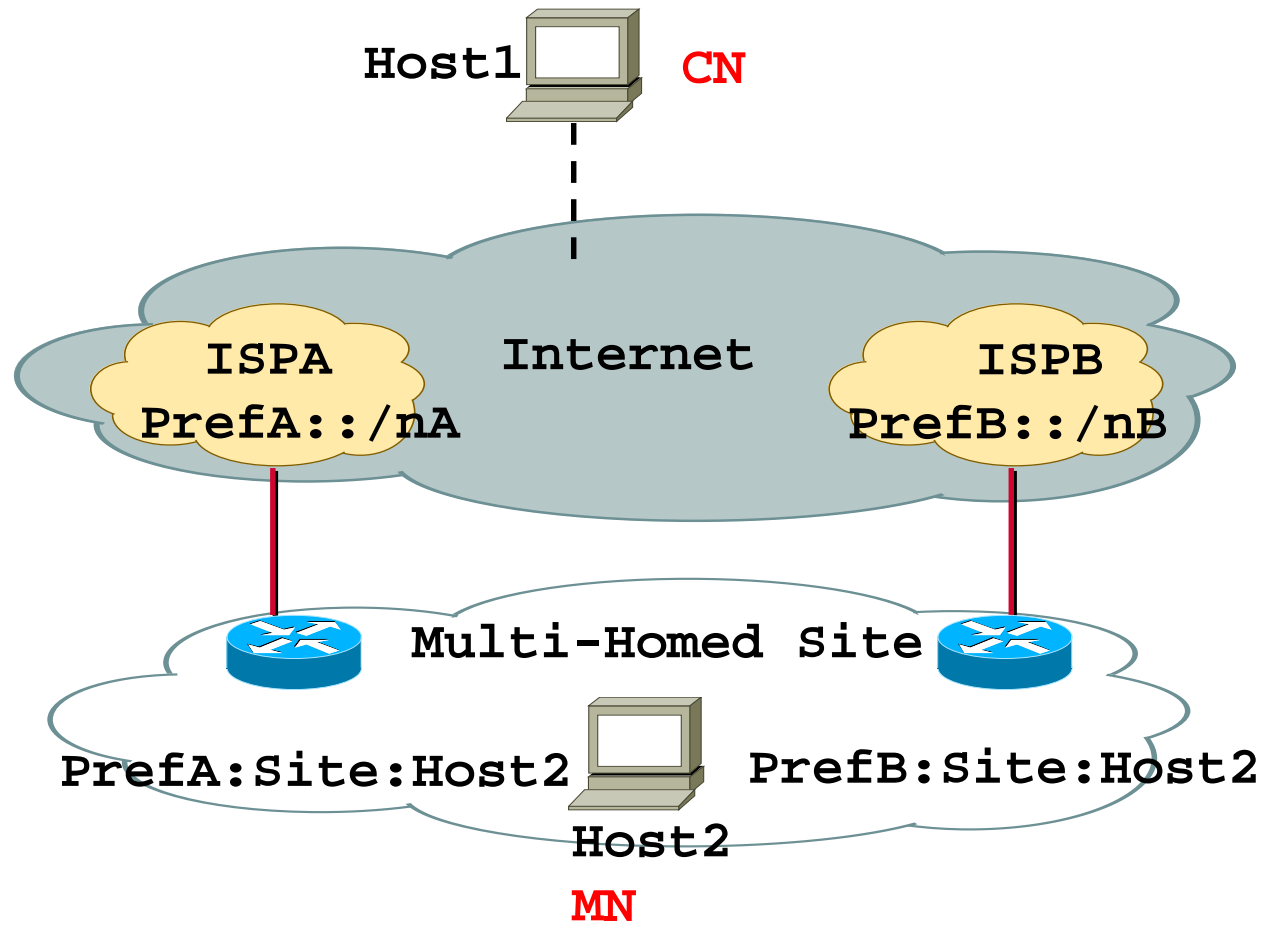
- F. Dupont, "Multihomed routing domain issues for IPv6 aggregatable scheme"
- C. Huitema & R. Draves, "Host-Centric IPv6 Multihoming"



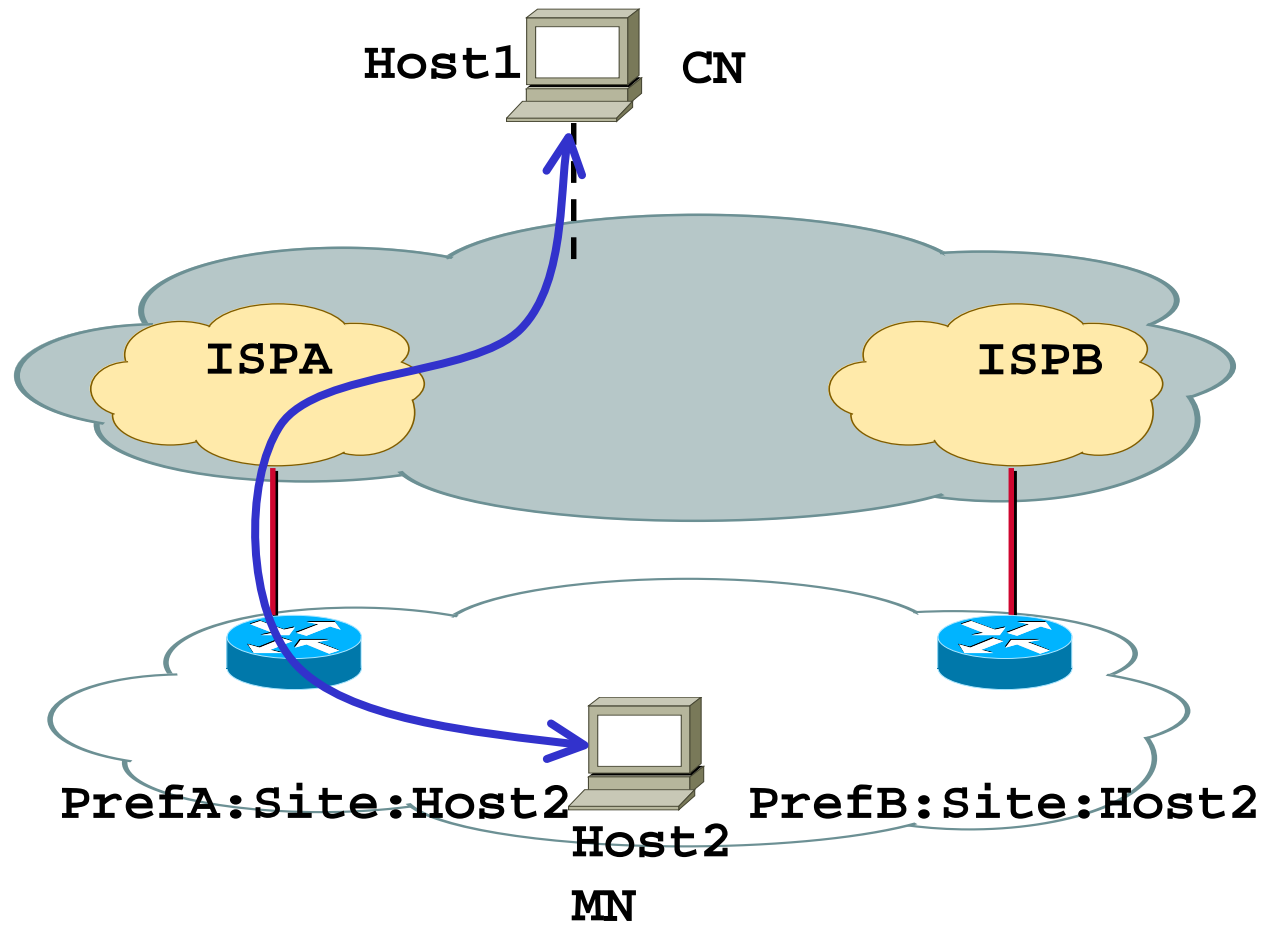
# Multi-homing Scenario



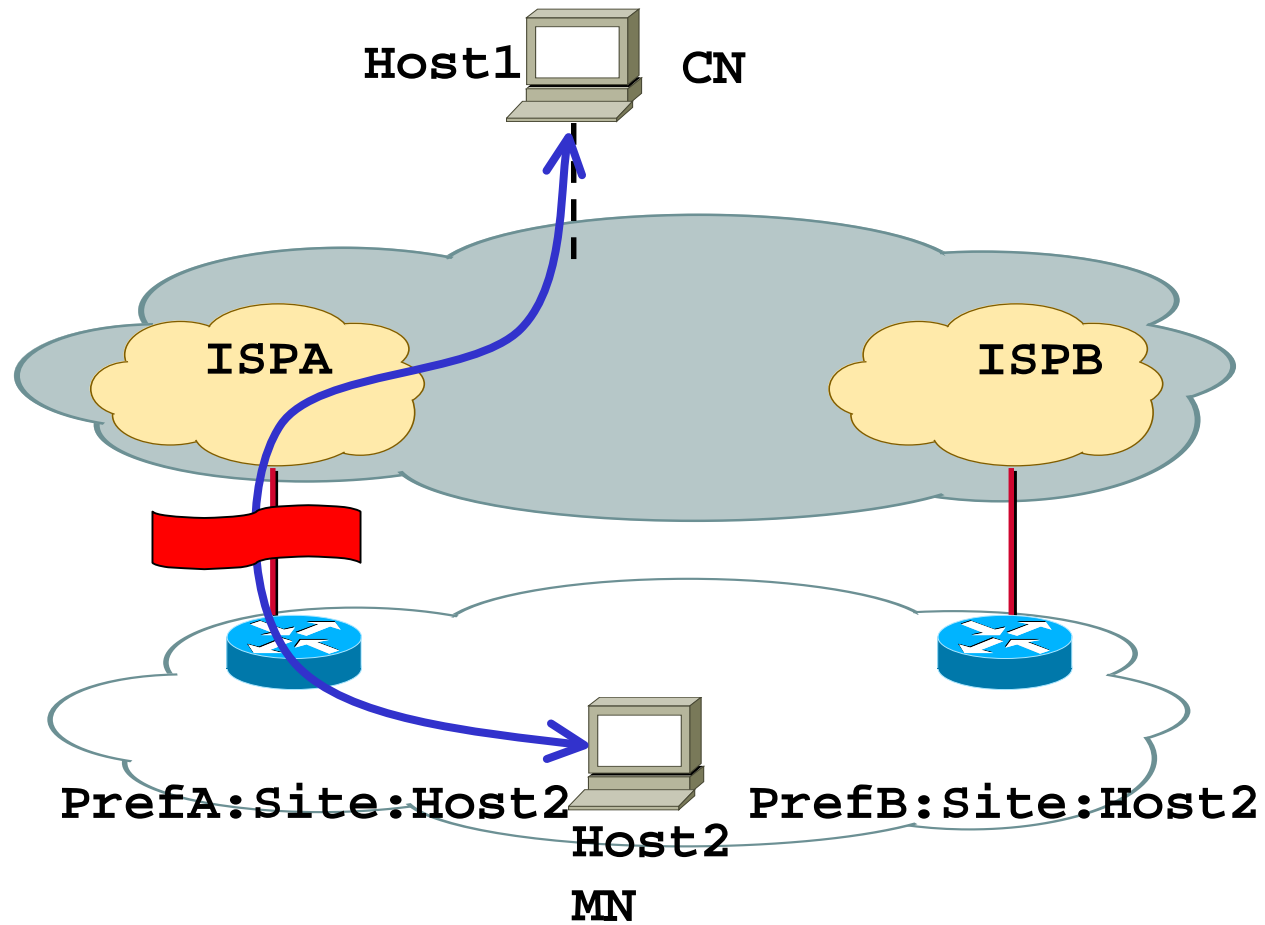
# MIPv6 Roles



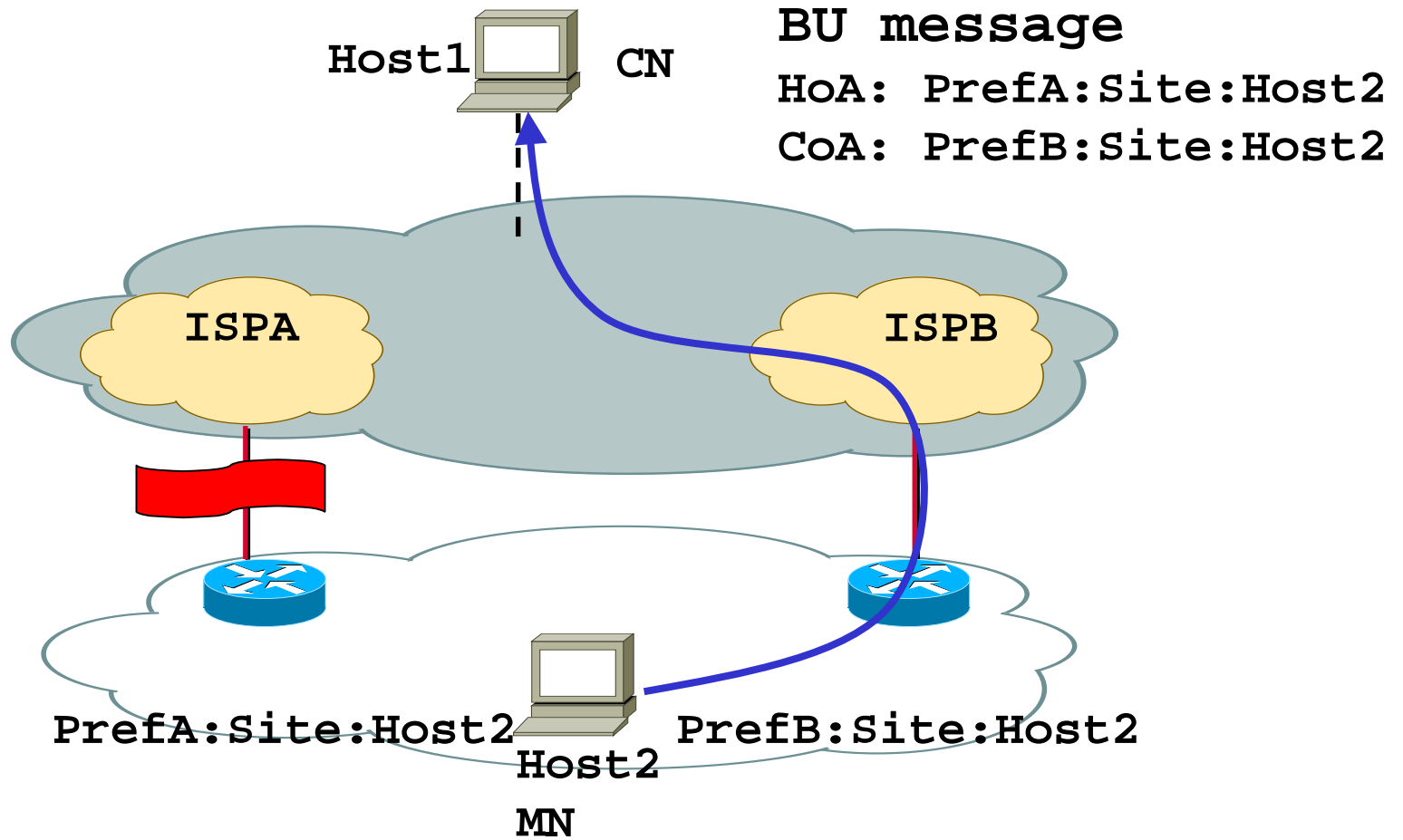
# Using BU messages



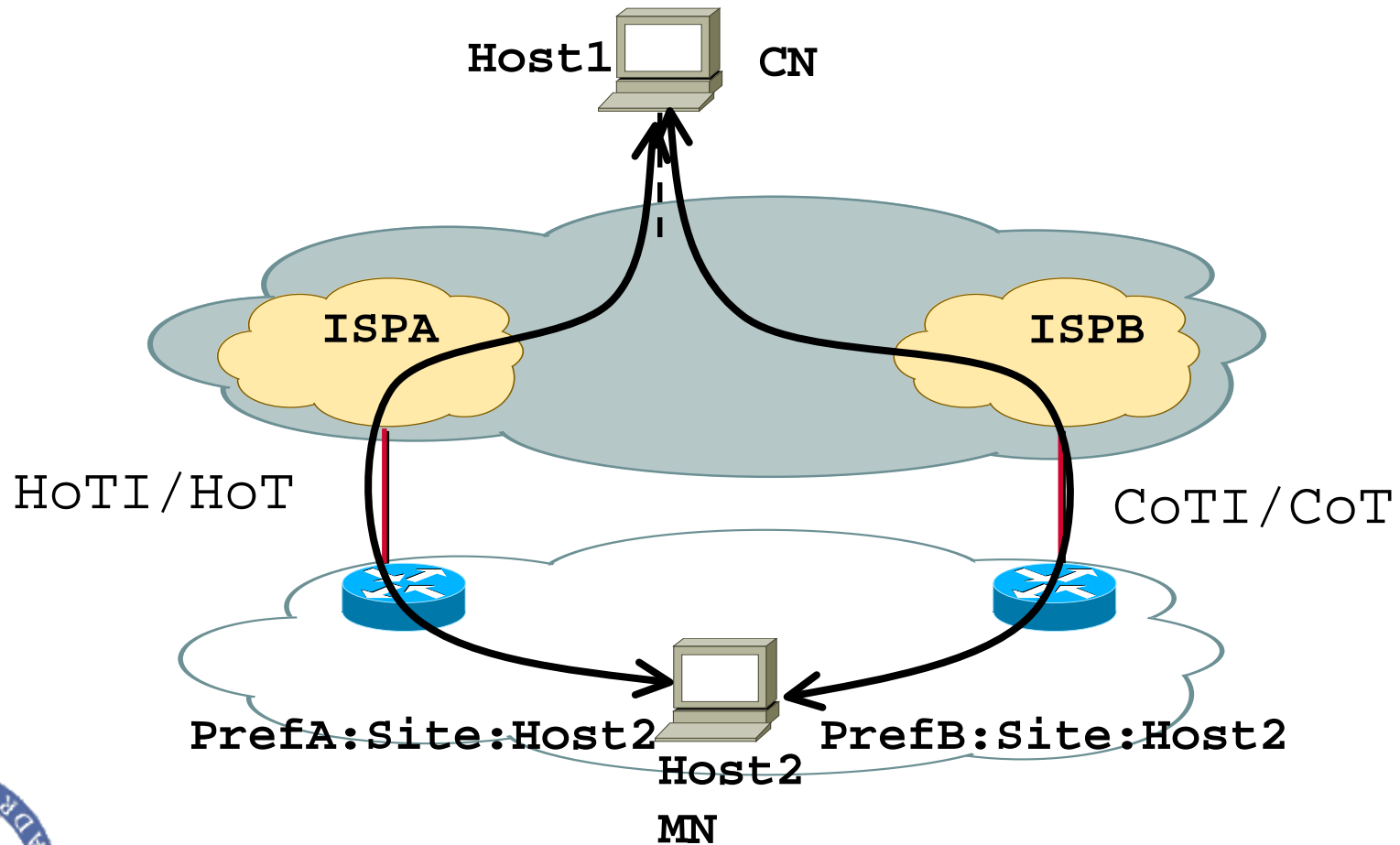
# Using BU messages



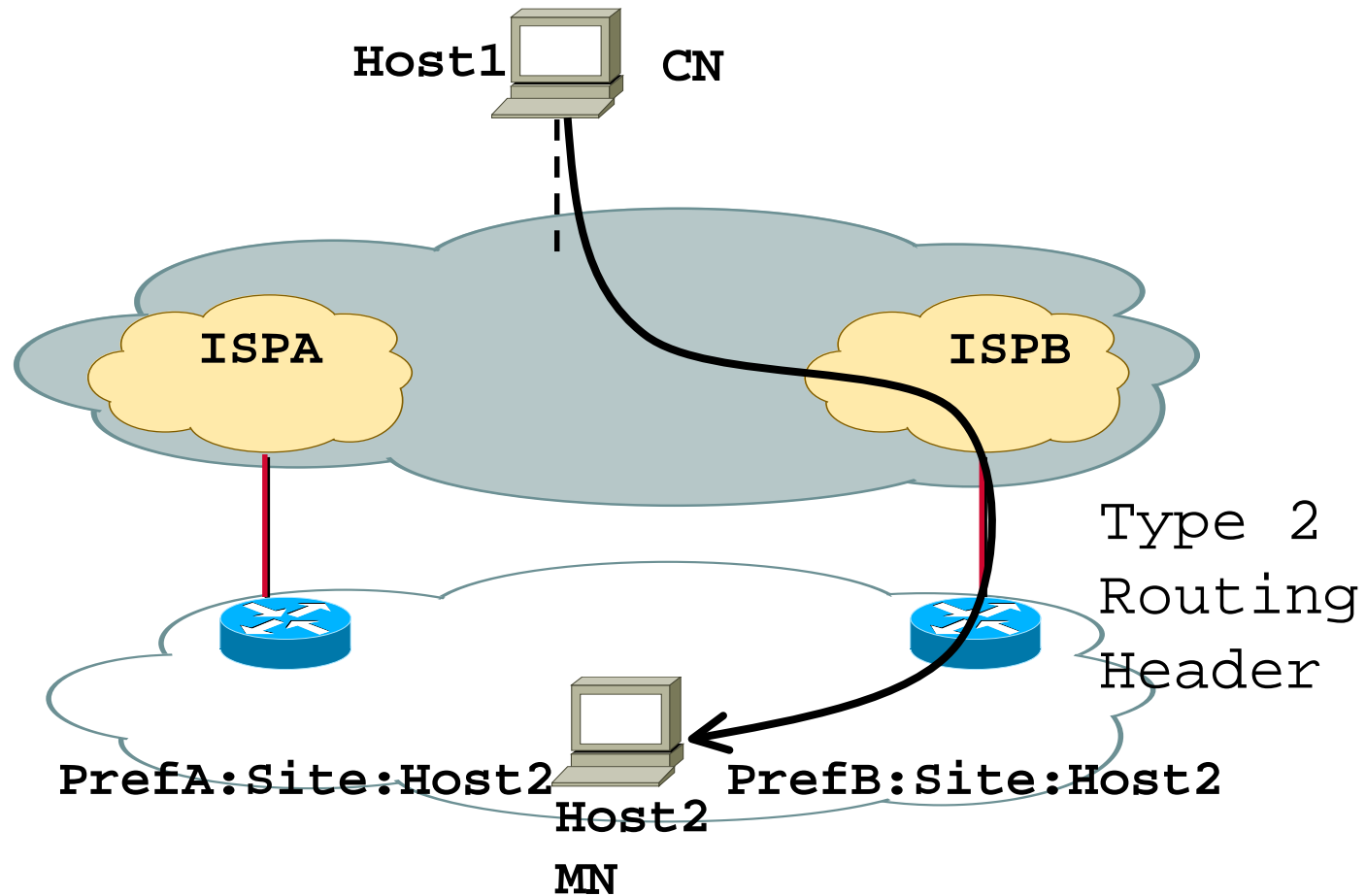
# Using BU messages



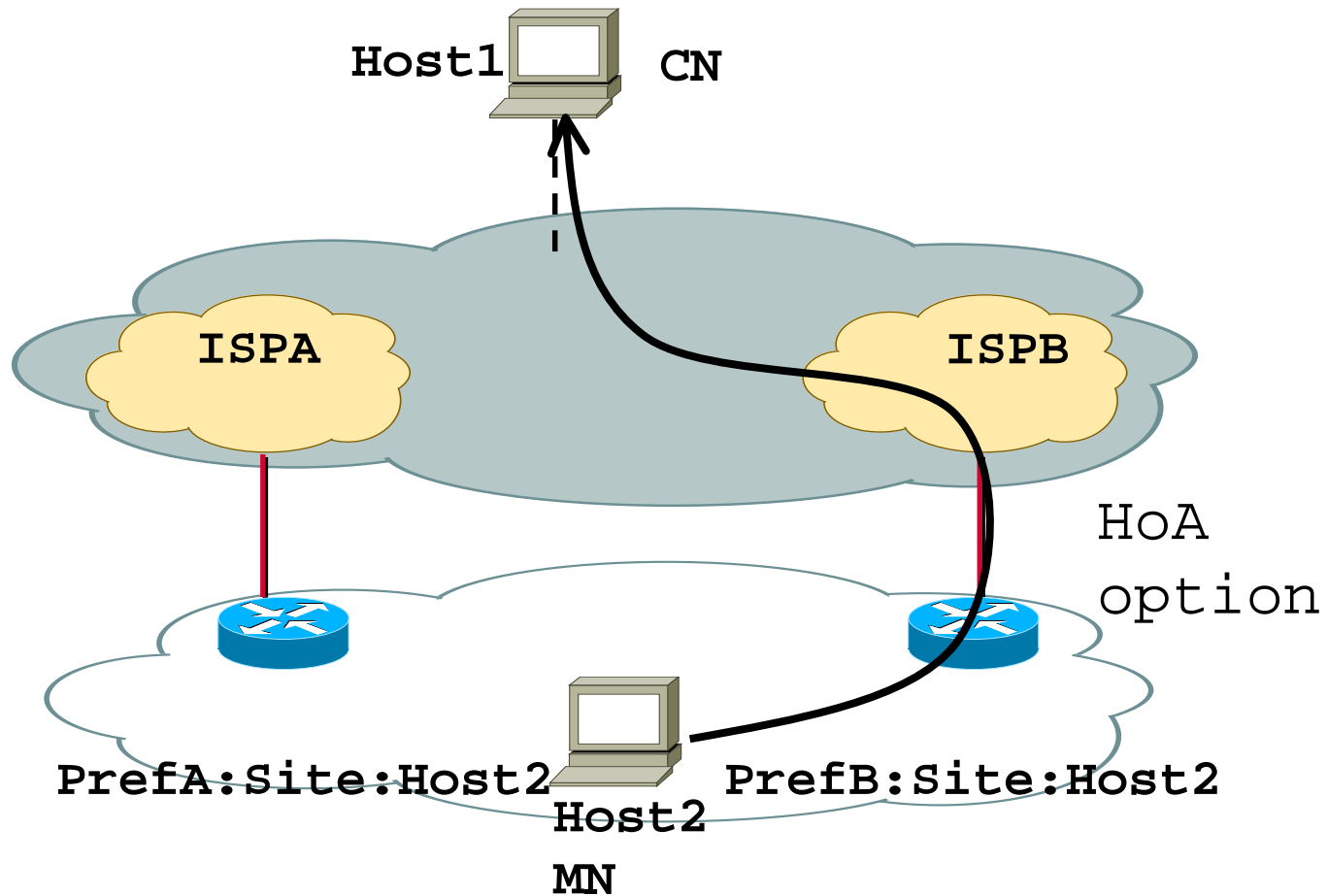
# Authorization of BU messages: Return Routability Procedure



So, after the BU message is successfully processed by the CN



So, after the BU message is successfully processed by the CN



Additional mechanism to select right exit  
(see Huitema's Host Centric mh)

# Other potential application of MIPv6 to multi-homing support

- Periodical HoTI/HoT - CoTI/CoT exchange could be used as failure detection mechanism (increased frequency)



# Functional limitation detected

- Lifetime of Binding information authorized using RR proc is limited to **7 min** because of security issues



# Functional limitation detected

- Lifetime of Binding information authorized using RR proc is limited to **7 min** because of security issues
- A possible solution proposed in draft-bagnulo-mobileip-unreachable-hoa

